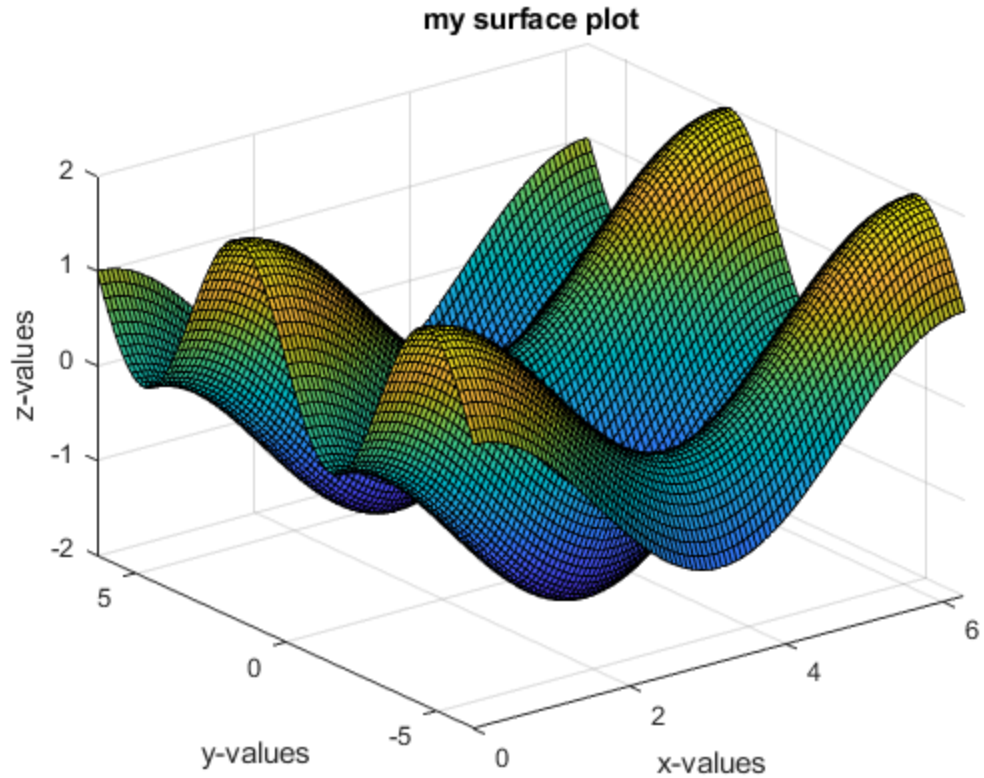
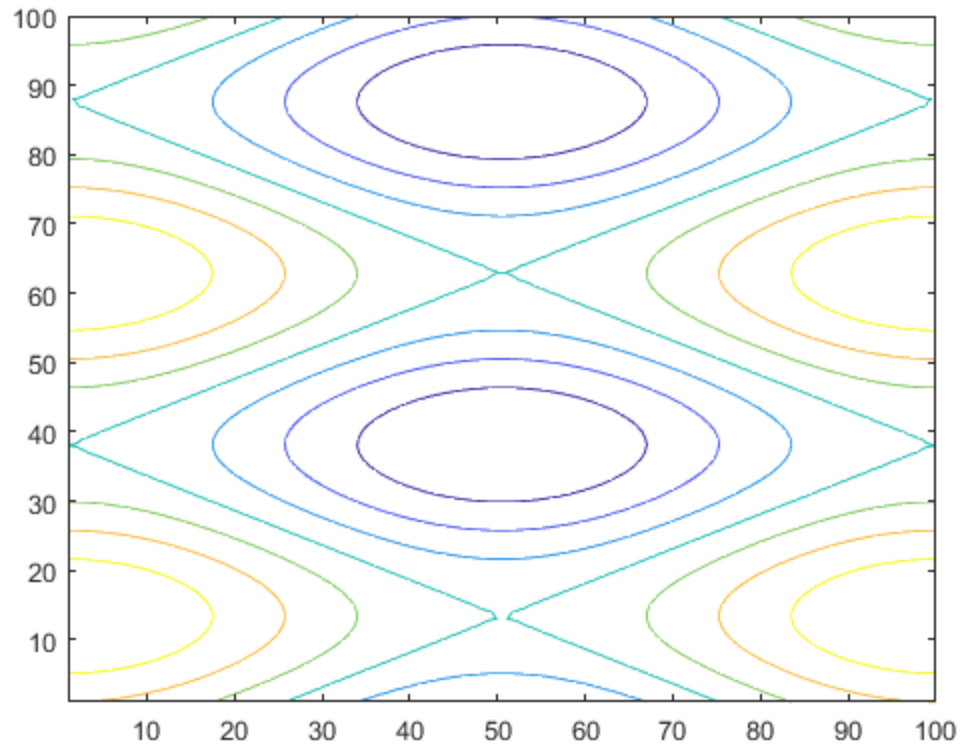


---

```
clc;
clear;
close all;
x=linspace(0,2*pi,100);
y=linspace(-2*pi,2*pi,100);
[X Y]=meshgrid(x,y);
z=cos(X)+sin(Y);
figure('name','surface plot','numbertitle','off');
surf(X,Y,z);
xlabel('x-values');
ylabel('y-values');
zlabel('z-values');
title('my surface plot');
figure('name','contour plot','numbertitle','off');
contour(z);
```





*Published with MATLAB® R2018b*